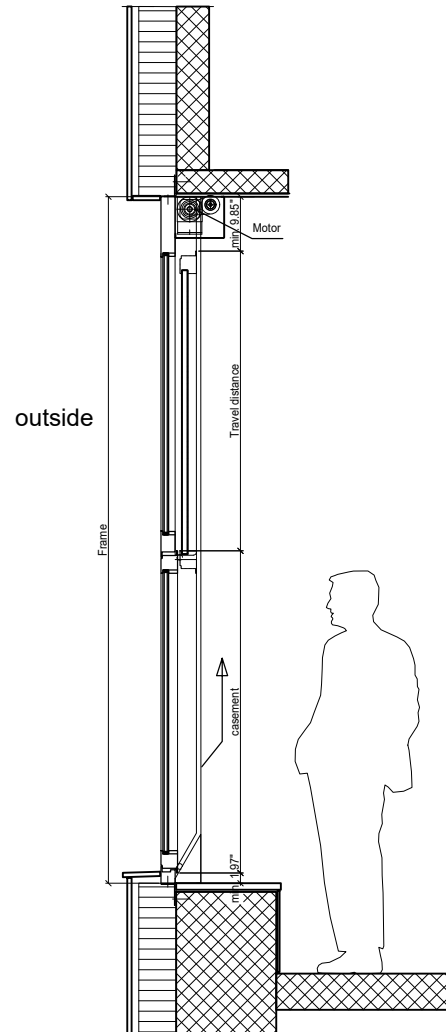


# HIRT MOVING ARCHITECTURE

## HIRT kinetics® HF U (motorised)

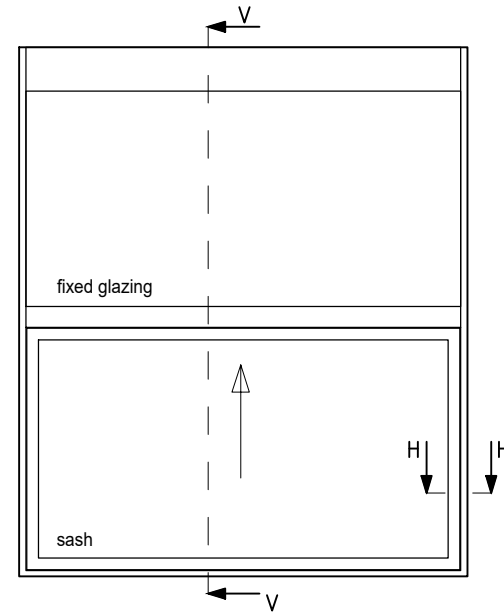
Vertical section



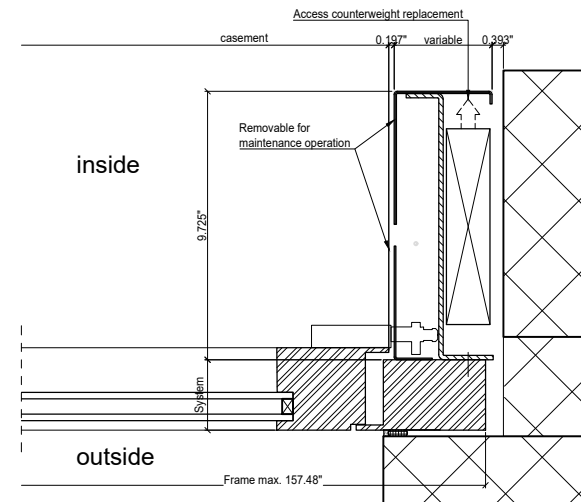
### Limit dimensions Sash motorised

- Width max. 157.48"
- Weight max. 661 lbs.
- Square measure max. 64.58 ft<sup>2</sup>

Front view



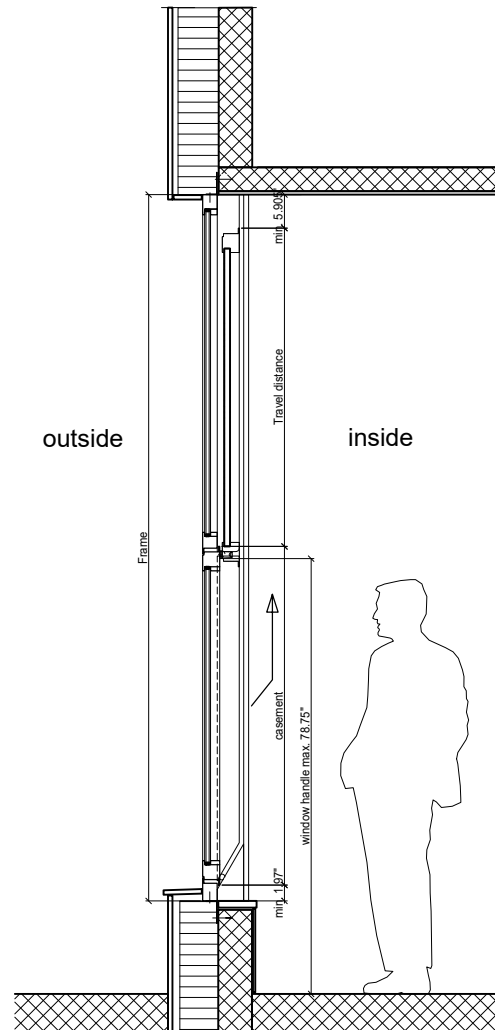
Horizontal section



# HIRT MOVING ARCHITECTURE

## HIRT kinetics® HF U

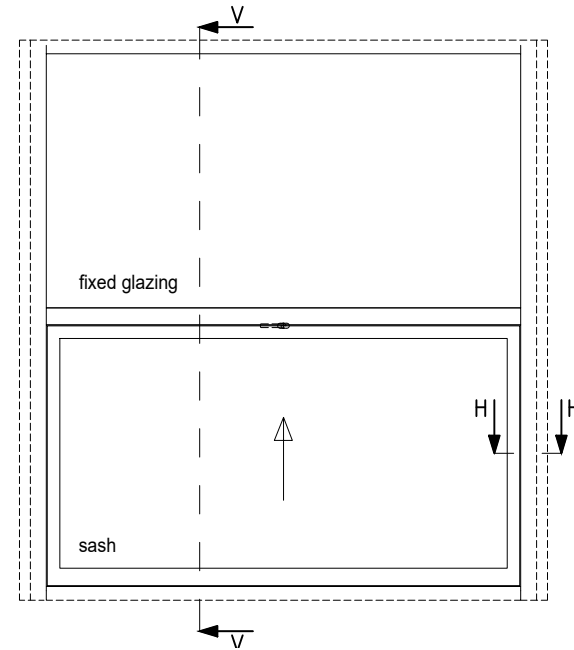
Vertical section



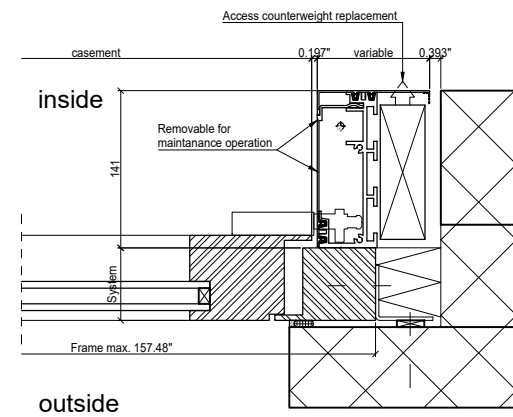
Limit dimensions Sash motorised

- Width max. 157.48"
- Weight max. 661 lbs.
- Square measure max. 64.58 ft<sup>2</sup>

Front view



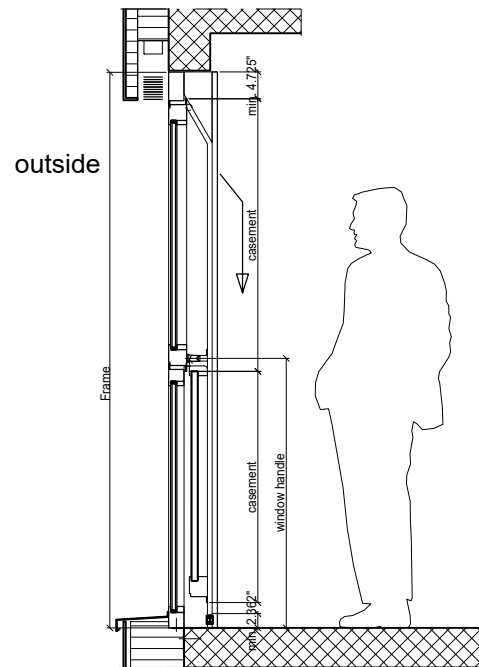
Horizontal section



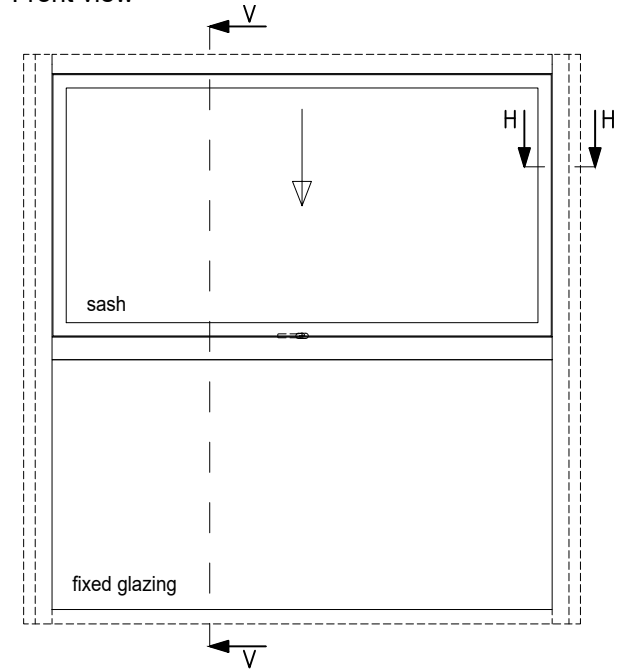
# HIRT MOVING ARCHITECTURE

HIRT kinetics® HF D

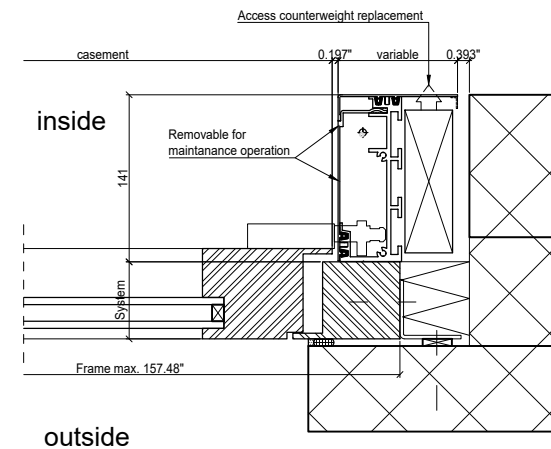
Vertical section



Front view



Horizontal section



Limit dimensions Sash motorised

- Width max. 157.48"
- Weight max. 661 lbs.
- Square measure max. 64.58 ft<sup>2</sup>